

Siuslaw Collaborative Watershed Restoration Program FY2018 Annual Report for Off-Forest Stewardship Projects

The Siuslaw Collaborative Watershed Restoration Program (SCRWP) is a forest stewardship cooperative collaboration between the Siuslaw National Forest (SNF), Cascade Pacific Resource Conservation & Development (CPRCD), and other partners including local communities, watershed councils, landowners, conservation districts, tribes, contractors, businesses, government agencies, environmental groups and industry.

The purpose of the program is to utilize Stewardship [contract] Timber Sales retained receipts (RR) to fund on and off forest watershed restoration projects. The on-Forest projects (not featured in this report) are managed by the Siuslaw National Forest and are funded from 60% of retained receipts. The off-Forest projects are on nearby private and non-federal lands within the Alesia, Hebo, Mary's Peak, Siuslaw, and Smith-Umpqua-Dunes Stewardship Group areas, and are funded from 40% of retained receipts. These projects benefit critical watershed and forest restoration work; provide community jobs and other economic benefits; and build and maintain strong relationships and trust among diverse groups of stakeholders.

This report summarizes the accomplishments of the off-Forest restoration watershed projects for FY2018.

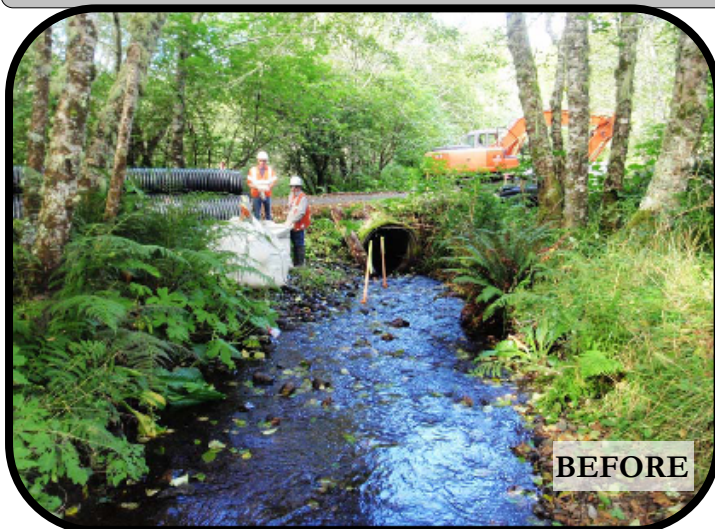
FY2018 Off-Forest Projects

Approved by the Siuslaw National Forest Technical Team. Projects are managed by the Stewardship Group partners

Project #	Applicant	Project Name	Award	Match	Total
WYA18-24	MidCoast WC	Little Lobster Stream and Riparian Restoration	\$ 81,472	\$150,043	\$ 231,515
WYA18-25	Lincoln SWCD	Mill & Slack Creek Riparian & Estuary Enhancement	\$ 28,126	\$ 45,859	\$ 73,985
WYH18-17	NNWC	Boulder Schrock Culvert Replacement	\$ 75,000	\$312,941	\$ 387,941
WYH18-18	TEP	Northwest Oregon Restoration Partnership	\$ 25,000	\$ 6,250	\$ 31,250
WYH18-19	TEP	Backyard Planting Program	\$ 11,429	\$ 4,800	\$ 22,229
WYM18-18	Marys River WC	Greasy-Woods Creeks Knotweed Control	\$ 22,321	\$ 5,670	\$ 27,991
WYS18-24	Siuslaw WC	Siuslaw Riparian Restoration 2019 & 2020	\$ 54,000	\$ 65,405	\$ 119,405
WYS18-25	Siuslaw SWCD	Fiddle Creek Focus-Area Restoration Implementation	\$ 54,060	\$20,385	\$ 74,445
WYS18-26	Siuslaw WC	Siuslaw Riparian Restoration 2018 & 2019	\$ 9,576	\$ 4,020	\$ 13,596
WYSU18-01	Smith River WC	Lower Wasson Creek Riparian Restoration	\$ 58,952	\$99,043	\$ 157,095
WYSU18-02	Coos WA	No. Spit Invasive Species Control & Native Planting	\$ 49,850	\$17,977	\$ 67,827
TOTAL			\$ 469,786	\$732,390	\$1,202,179

Project Showcase

Example of Off Forest Project within the Hebo Stewardship Group area - Bower Creek culvert Removal



BEFORE



AFTER

FY2018 Biophysical Accomplishments & Expenditures of on-going projects

Restoration services performed by collaborative partners and contractors

VEGETATION MANAGEMENT

1.2 acres manual site prep
 75 acres mechanical site prep
 7200 seedlings protected
 75 acres upland forest planted
 12,000 upland forests trees planted

INVASIVES CONTROL

51 acres riparian area sprayed (herbicide)
 9750 trees in riparian areas released (spraying)
 7 acres upland forest manual removal

STREAM, LAKE OR WETLAND TREATMENTS

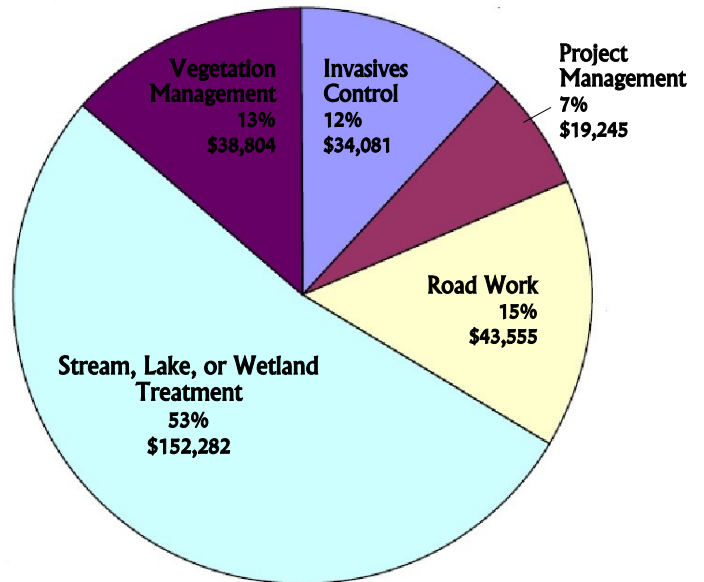
9,750 native trees planted in riparian areas
 55,000 native trees and shrubs propagated
 4 culverts or bridges replaced or repaired
 3.3 miles in-stream log placement
 247 logs placed in-stream

ROAD WORK

6.4 miles grading and drainage improvements

TOTAL SPENT by CATEGORY

\$287,969



FY2018 Local Economic Benefits

Jobs and income created from on-the-ground stewardship project activity

<u>County</u>	<u>\$ Earned</u>	<u>Avg wage</u>	<u>State taxes</u>	<u>Hrs Worked</u>	<u>FTE Jobs</u>
Benton, OR	\$78,381.00	22.02	\$7,054.29	3,558.88	1.77
Clackamas, OR	\$59,000.00	18.23	\$5,310.00	3,236.42	1.61
Coos, OR	\$9,838.00	16.45	\$885.42	597.97	0.30
Lake, OR	\$458.00	31.27	\$41.22	14.65	0.01
Lane, OR	\$38,762.25	19.94	\$3,488.60	1,943.90	0.96
Lincoln, OR	\$34,912.00	16.5	\$3,142.08	2,115.25	1.05
Tillamook, OR	<u>\$20,439.00</u>	<u>16.68</u>	<u>\$1,839.51</u>	<u>1,225.65</u>	<u>0.61</u>
	<i>\$241,790.25</i>	<i>20.15</i>	<i>\$21,761.12</i>	<i>12,692.72</i>	<i>6.31</i>

The information listed in this report was compiled through check requests submitted to CPRCD by off-Forest project managers and local contractors performing the restoration services. The methods used to determine the above information was developed based on:

- quantity and specific units of measurement (acres, # of plants, etc.) for the restoration project type (forest, stream, etc.); and*
- worker production estimates and federal wage determination rates for FTE jobs, average wages, net incomes and state tax revenue.*

These methodologies were developed by SNF staff and Integrated Resource Management (a private forestry consultant), and information from Ecosystem Workforce at University of Oregon. Details and methodologies are defined in the 2014 Multiparty Monitoring Report found at CPRC's Stewardship website found at www.cascadepacificstewardship.org.