



ODFW's Priority Wildlife Connectivity Areas (PWCAs)

Adam Phelps
Habitat Division Conservation Liaison
Oregon Department of Fish and Wildlife





Outline

- Project background
- Brief overview of methods
- Priority Wildlife Connectivity Areas (PWCAs)
- Implementation
- Available products







the OREGON
CONSERVATION
STRATEGY





Oregon Connectivity Assessment and Mapping Project

2019-2022



**Where are the most important
areas for wildlife connectivity?**





Rachel Wheat
Andrea Hanson
Arty Rodriguez*

Catherine de Rivera
Martin Lafrenz
Daniel Taylor-Rodriguez
Jacob Schultz
Lauren McKinney-Wise*
Alana Simmons*
Claire Brumbaugh-Smith

Leslie Bliss-Ketchum
Amanda Temple*
Marie Hepner

*Now affiliated elsewhere

ABC Birds
Avangrid Renewables
Audubon Society
Backcountry Hunters and Anglers
Bureau of Land Management
Burns Paiute Tribe
Cafferata Consulting
Cascadia Wild
Center for Biological Diversity
City of Eugene
City of Gresham
City of Portland
City of Salem
City of Tualatin
Clackamas Community College
Clackamas River Basin Council
Clackamas Soil & Water Cons District
Clean Water Services
Colorado Mesa University
Columbia River Gorge Commission
Confederated Tribes of the Grande Ronde
Curry Soil & Water Conservation District
Deschutes Soil & Watershed Cons District
Environment and Climate Change Canada

Fosters Natural Resource Contracting
Global Owl Project
ICF
Institute for Applied Ecology
Institute for Bird Populations
Institute for Wildlife Studies
Iowa State University
Klamath Bird Observatory
Marion Soil & Watershed Cons District
Mason, Bruce, and Girard, Inc.
McBain Associates
NCASI
National Oceanic and Atmospheric
Administration
National Park Service
Neal Smith National Wildlife Refuge
Northwest Ecological Research Institute
Oregon Biodiversity Information Center
Oregon Department of Forestry
Oregon Department of State Lands
Oregon Department of Transportation
Oregon Natural Desert Association
Oregon State University
Oregon State University Cascades

Owl Ridge Natural Resource Consultants
Portland Audubon
Portland Bureau of Enviro Services
Portland Parks & Recreation
Powder Basin Watershed Council
Southern Oregon University
Stantec
The Beaver Coalition
The Trust for Public Land
The Wetlands Conservancy
Theodore Roosevelt Conservation
Partnership
U.S. Department of Agriculture
U.S. Fish & Wildlife Service
U.S. Forest Service
U.S. Geological Survey
University Nevada Reno
University of Idaho
University of Montana
Wallowa Soil & Watershed Cons District
Washington Department of Fish & Wildlife
Washington State University
Wildlands Network
Xerces Society



Project Workflow

Surrogate
species
selection

Habitat
permeability
modeling

Habitat
permeability
validation

Habitat
connectivity
modeling

Prioritization

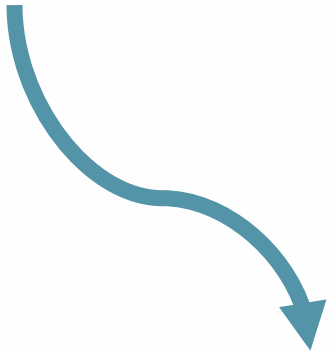
Compositing
Species
Priorities

Priority
Connectivity
Areas





Project Workflow



Identification of suitable species for modeling







Project Workflow

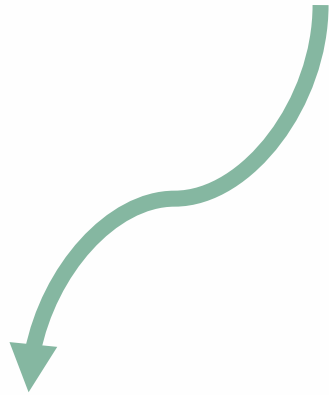


Use spatial data to represent each species' habitat needs





Project Workflow



Species expert review, followed by formal statistical validation





Project Workflow



Areas where more or less movement is expected





Project Workflow



Identify the most important areas for each species





Project Workflow



Top 1% of all species' priorities, linked





Project Workflow

Surrogate
species
selection

Habitat
permeability
modeling

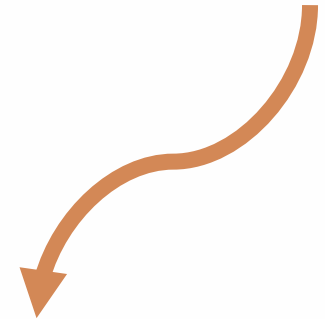
Habitat
permeability
validation

Habitat
connectivity
modeling

Prioritization

Compositing
Species
Priorities

Priority
Connectivity
Areas



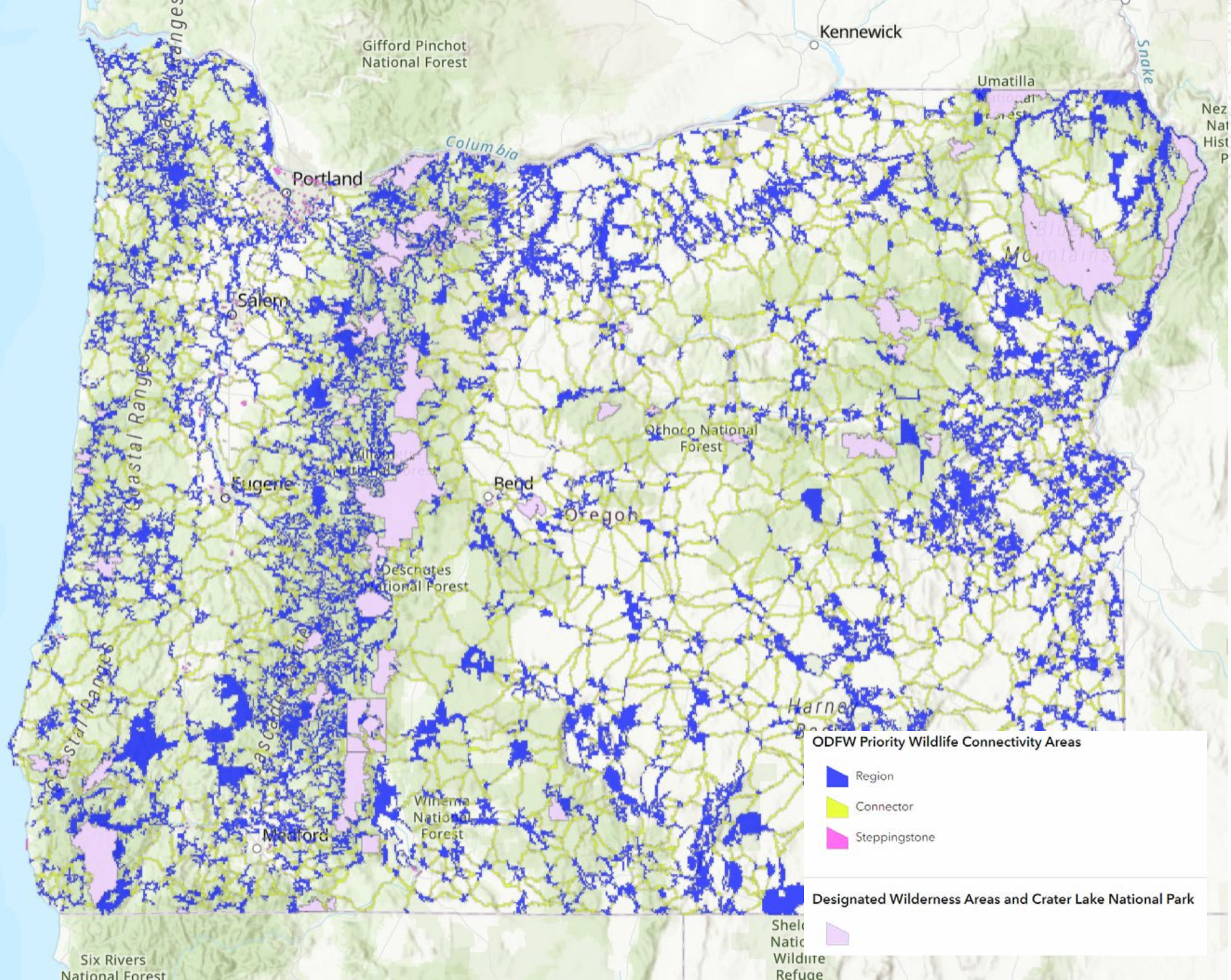
Final selection using grid of 40-acre hexagons



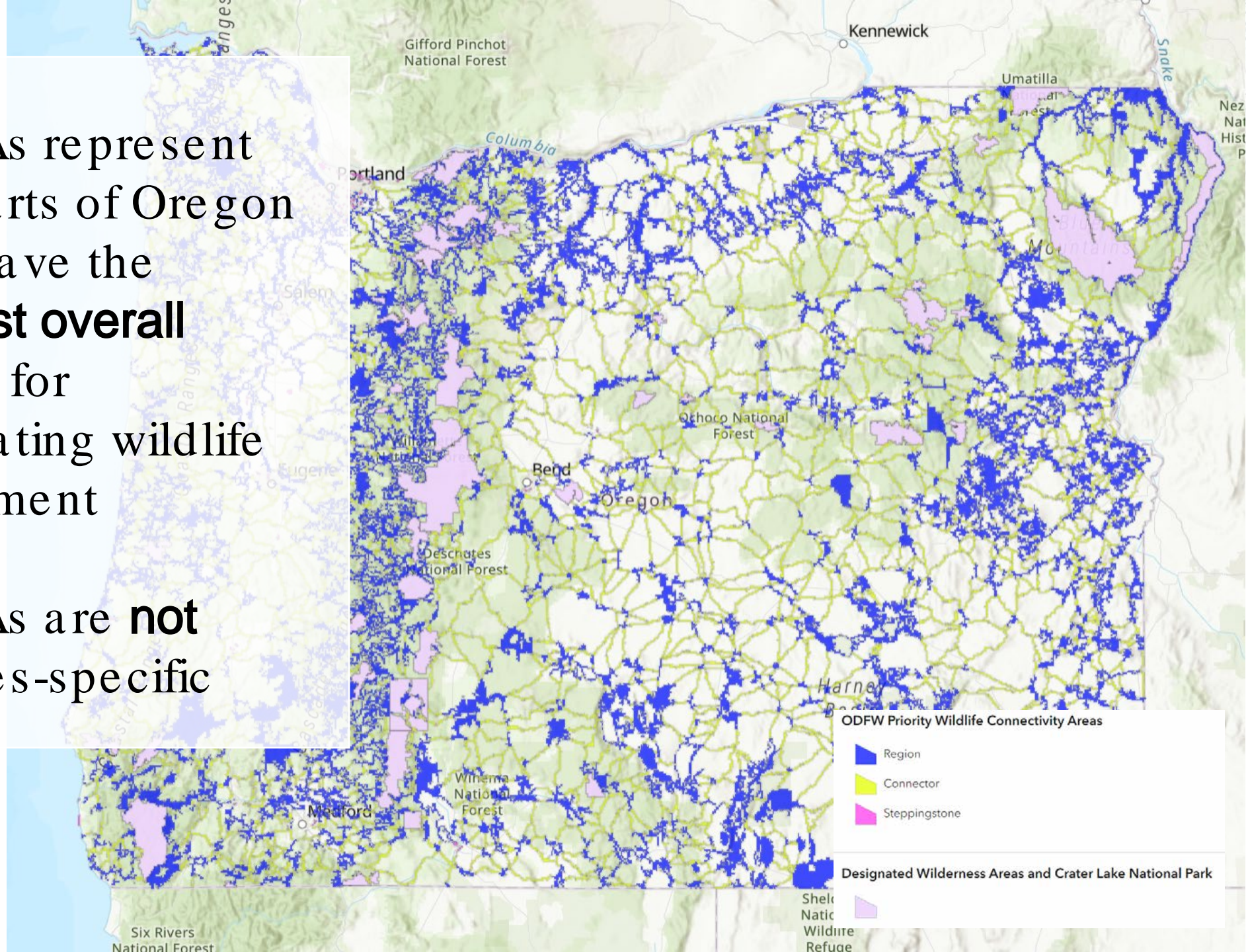


Priority Wildlife Connectivity Areas (PWCAs)

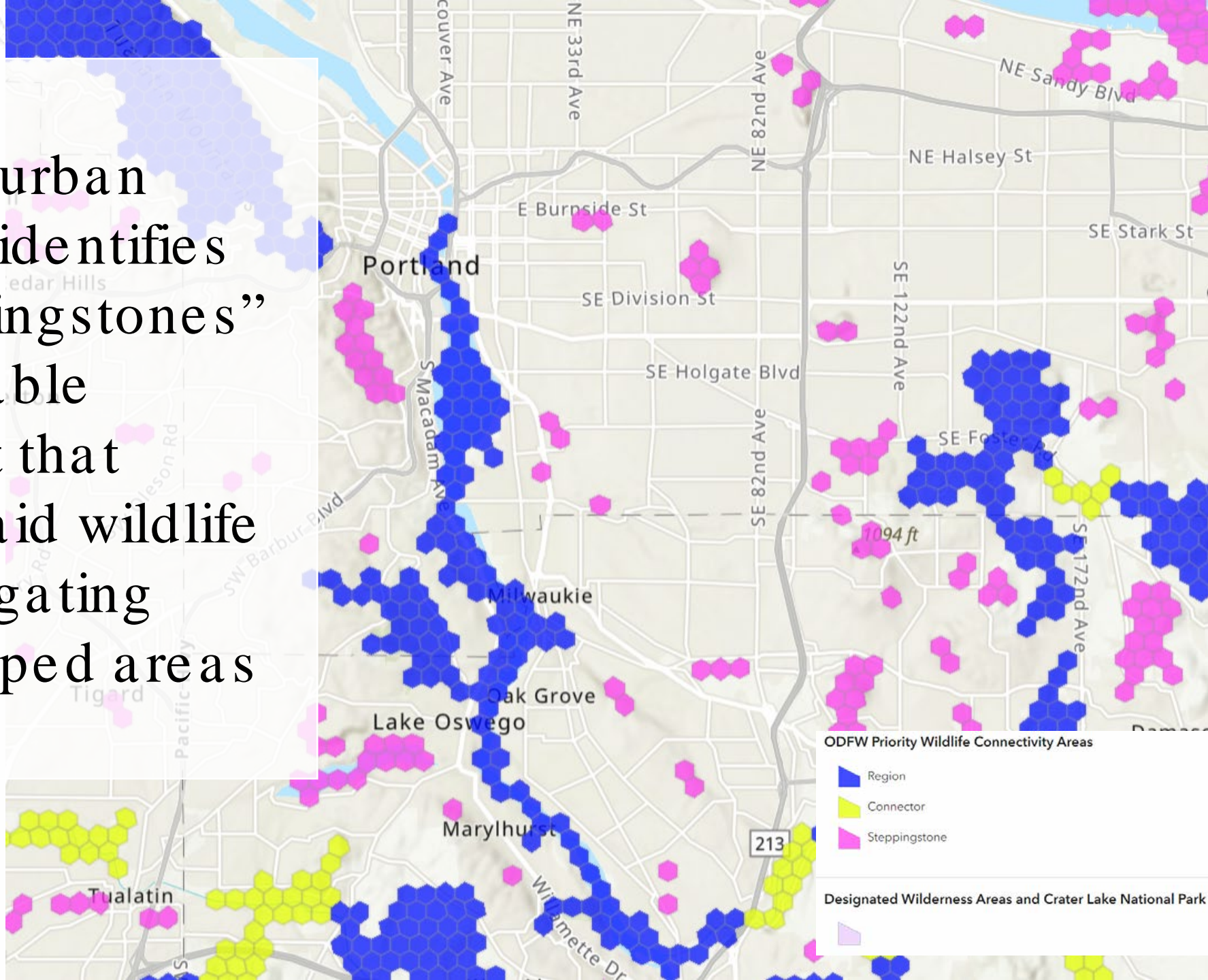




- PWCAs represent the parts of Oregon that have the **highest overall value** for facilitating wildlife movement
- PWCAs are **not** species-specific



- Within urban areas, identifies “steppingstones” of suitable habitat that might aid wildlife in navigating developed areas





Implementation





Implementation

HB 2834 (2019)--Wildlife Corridor Action Plan

- To “preserve long-term habitat connectivity for wildlife”
- Based on OCAMP results
 - Priority areas tied to specific recommendations
- Plan “shall provide guidance for all state agencies”
- Reviewed and updated every 5 years



Oregon Wildlife Connectivity Implementation Plan



- Outlines eight priority actions for the next five years toward integrating wildlife connectivity priorities into ODFW's strategies, plans, and projects
- Will be revisited/updated every five years



Implementation





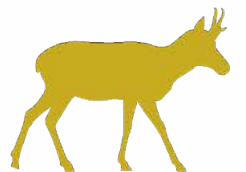
PWCA Products





PWCA Products

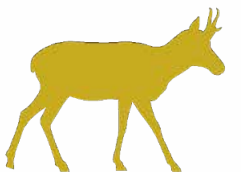
- [Interactive web map](#)
- [Information on Oregon Conservation Strategy](#)
- [Technical Report](#)
- [Lay-friendly Executive Summary](#)
- [Data download](#)
- [One-page handout](#)





PWCA Products

- Web map:
 - Identifies locations of PWCAs
 - Identifies majority land manager(s)
 - Has **recommended conservation actions** for each 40-acre hexagon:
 - Protect
 - Enhance/Maintain
 - Restore
 - Mitigate





Questions?

Rachel.E.Wheat@odfw.oregon.gov

STATE WILDLIFE ACTION PLAN (SWAP) REVISION TIMELINE

