

Siuslaw Stewardship Watershed Restoration Program



A snapshot of 2024 accomplishments

OFF-FOREST PROJECT

Siuslaw Stewardship Watershed Restoration Program

Upper Marys Fish Habitat Restoration Phase I

Marys Peak Stewardship Group

Marys River Watershed Council

- 5.61 acres riparian herbicide invasives treatment
- 7.16 acres riparian mechanical invasives treatment
- 1480 willow cuttings planted with protective tubing
- 154 native shrubs planted
- Thinning of young, overstocked Douglas firs to benefit planted native cedars
- 39 LWD logs placed
- 4 Beaver Dam analogs installed



before



after



HSG Seed Collection

OFF-FOREST PROJECT

Siuslaw Stewardship Watershed Restoration Program

Siuslaw Stewardship Group

Native Plant Establishment

Siuslaw Soil & Water Conservation District

Seth Mead

- 54 acres along 5 miles of riparian areas
 - native riparian and wetland vegetation released, planted & maintained



before



after



before



after

OFF-FOREST PROJECT

Siuslaw Stewardship Watershed Restoration Program



before



after



before



after

Alsea Stewardship Group

Wright Creek Water Quality and Riparian Enhancement

Fred M. van Eck Forest Foundation

- 45 existing degraded culverts repaired and replaced
- 23 new culverts installed



before



after

OFF-FOREST PROJECT

Siuslaw Stewardship Watershed Restoration Program

Hebo Stewardship Group

Coastal Prairie Habitat Restoration *Camp Westwind*

- 7 acres invasives herbicide and mechanical treatment
- 50 lbs of native seed collection
- 3250 plugs and bareroot plants secured for fall 2026 planting
- Early blue violet seed increase bed established



Fraser Farm



before



after



Siuslaw River

before



after

Siuslaw Riparian Restoration Planting & Release Maintenance

Siuslaw Watershed Council

- 20 miles riparian restoration
- 10,000 trees planted in riparian area
- 165 Landowners participated



before



Chickahominy Creek

after

Marys Peak Stewardship Group

West Point Marys Peak Meadow Restoration

Alliance for Recreation and Natural Areas (AFRANA)

- 15.5 acres non-native invasives manual removal of:
 - oxeye daisy
 - St. John's wort
 - Foxglove
 - conifer regeneration seedlings
- .57 pounds of 14 species of native seed collected for seed bank
- Ordered 750 plugs to be grown and outplanted in 2025
- Engaged and informed the public about Marys Peak through direct volunteer involvement in restoration activities



OFF-FOREST PROJECT

Siuslaw Stewardship Watershed Restoration Program

Five Rivers Meadow Creation

Rocky Mountain Elk Foundation

Ray Hughey

- 10 acres herbicide invasives removal
- 21 acres meadow mowing
- 21 acres wildlife forage seed applied



Hansen property location



before



after

Alsea Stewardship Group



Upper Deadwood Helicopter Coho Wood Placement

Paul Burns, Central Coast Ranger District

- 100 mature LWD placed
- 489 plantation LWD with root wads placed
- 4 miles along Upper Deadwood Creek

ON-FOREST PROJECT

Siuslaw Stewardship Watershed Restoration Program

Forest wide Stewardship Group areas

Abandoned Vehicles Project

Matt Ramich/Chris Mayes

37 vehicles, trailers, campers, cars removed from USFS: roads, trails, campgrounds and more



before



after



before



after

ON-FOREST PROJECT

Siuslaw Stewardship Watershed Restoration Program

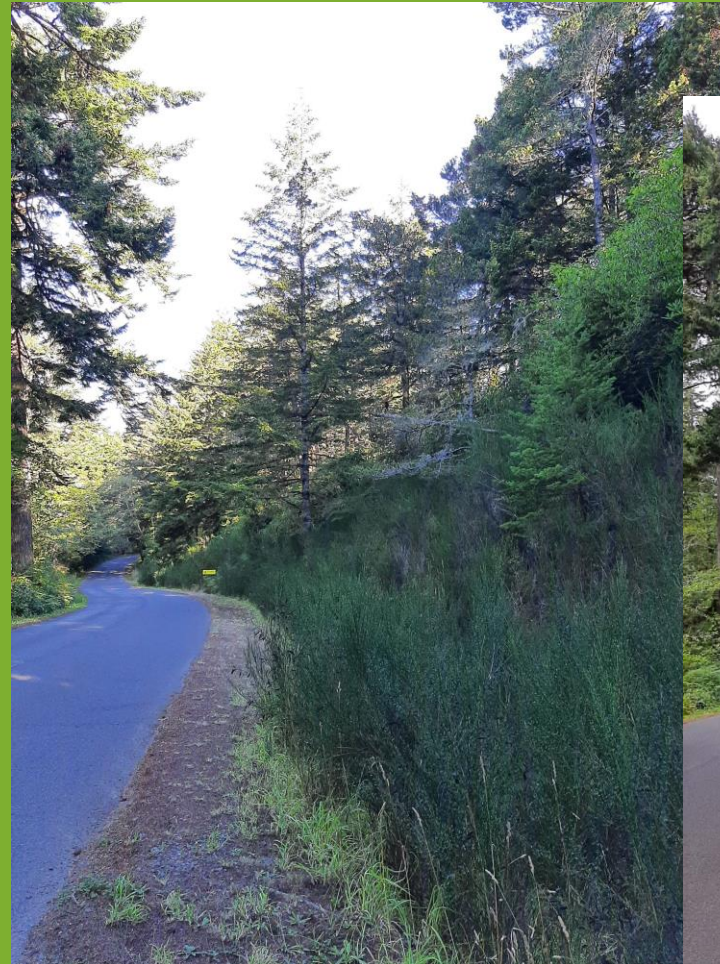
Siuslaw Stewardship Group



Snowy Plover Habitat Restoration, Predator Control, Nest Protection & Beachgrass Removal
Cindy Burns, Central Coast Ranger District

ODNRA Recreation Site Vegetation Control Armand Rebischke, Central Coast Ranger District

- 17 acres dunes and roadway scots broom invasive weed removal
- 5 dunes recreation sites treated



before



after

Native Plant Materials Development

Chelsea Monks, Botany & Invasive Species

- 25 lb of Native Seed Collection
- 10 acres Native Plant Propagation

