

Siuslaw Stewardship Watershed Restoration Program



A snapshot of 2025 accomplishments



Holding area 60,000 large, hardy trees and shrubs.



Volunteers transplant seedlings into gallon pots



Schooner Creek Discovery Park planting

Northwest Oregon Restoration Partnership (NORP)

Tillamook Estuaries Partnership, Aka Skinner

- Native plant nursery grows 50,000 large container plants from wild-collected seed
- Distributes to 30 agencies, nonprofits and tribes
- Utilized for Oregon coast estuarine, riparian, and meadow restoration sites
- Employs incarcerated youth from OYA Camp Tillamook



Bear Creek before fencing and planting

Bear Creek after

Bear Creek Habitat Enhancement Phase III **Siuslaw Soil & Water Conservation District, Seth Mead**

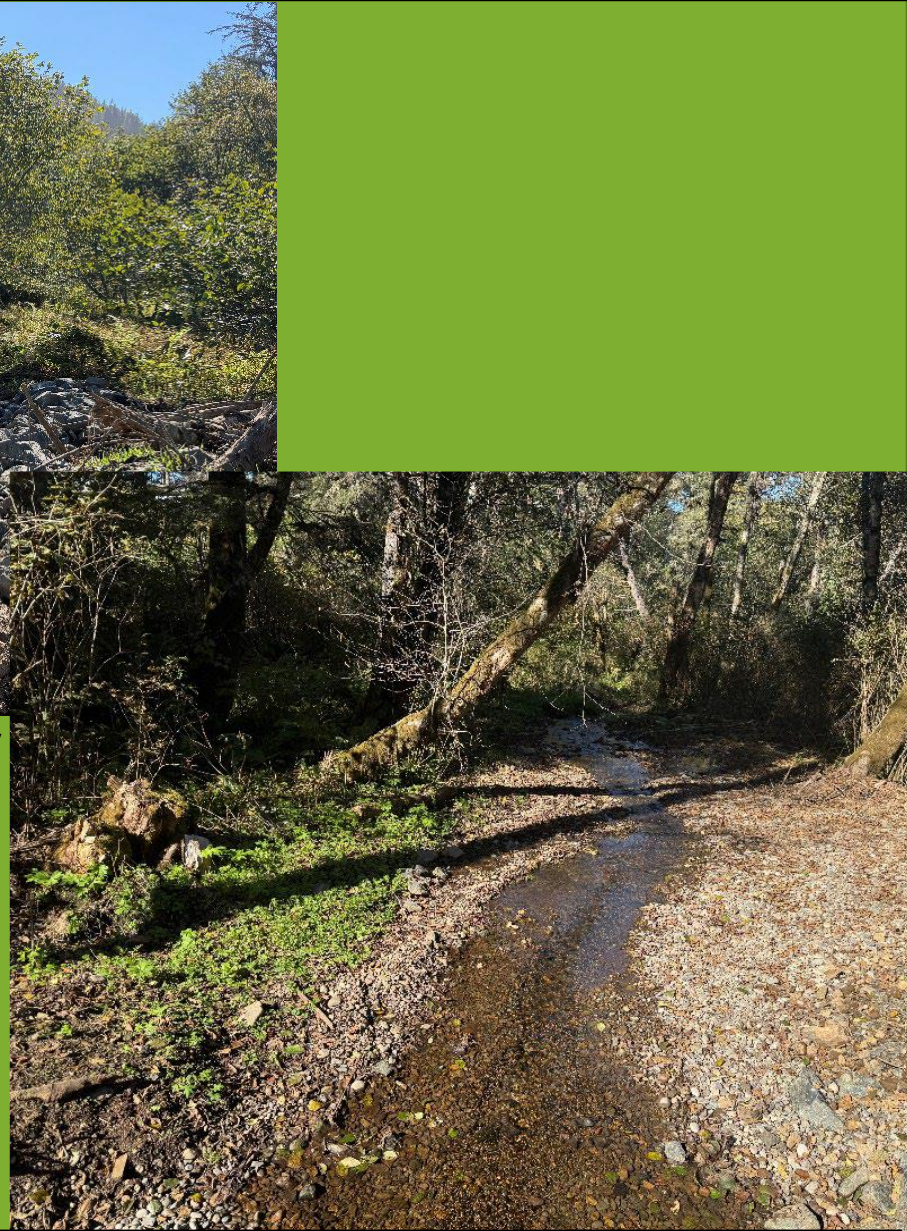
- 100 LWD placed in Bear Creek for 1.25 stream miles
- 11 acres riparian buffer native trees/shrubs along 1.25 stream miles
- 15,150 lin ft 6.5' high wildlife friendly livestock exclusion fence



Upper Sutton Creek before



Upper Sutton Creek after

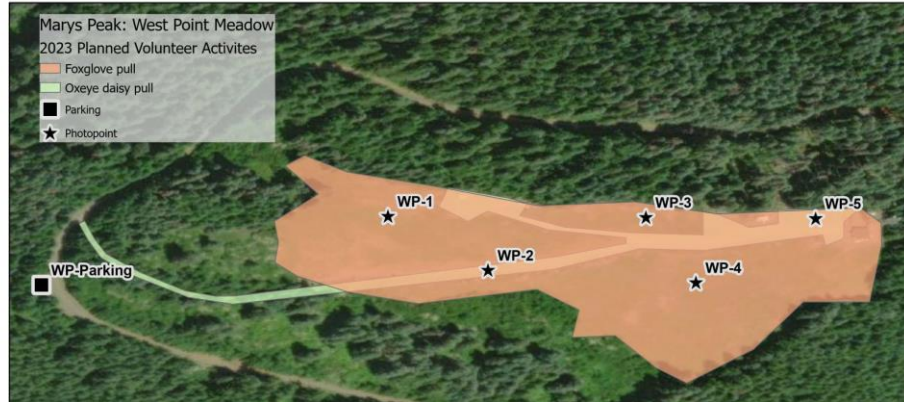


Upper Sutton Creek Fish Passage

Nestucca, Neskowin & Sand Lake Watersheds Council

Natalie Nites

- 2 undersized and clogged culverts removed to improve fish passage
- Prepared stream bed with rock and alluvial materials



West Point Marys Peak Meadow Restoration AFRANA, Jeff Uebel

- 13 acres invasives removal – manual & herbicide
- 176 acres seed collection & cleaning
- 3 native meadow seed banks established
- 750 plugs planted consisting of 7 native species
- 250+ volunteer hours restoration & public outreach





Fraser Farm April 2024 - before



Fraser Farm January 2026 - after



Native seed germination January 2026

Volunteers planting *Viola adunca* November 2025

Coastal Prairie Habitat Restoration at Camp Westwind, Fraser Farm

Westwind Stewardship Group, Llew Phipps, IAE

- 7 acres invasives removal and mowing
- 2 acres native seed collection
- 2000 plugs & native seeds planted on 7 acres meadow
- 2 seed increase field production beds established





before



after

Siuslaw River



before



after

Chickahominy Creek

Siuslaw Riparian Restoration Planting & Maintenance Siuslaw Watershed Council, Britnee Church

- 20 miles riparian restoration
- 10,000 trees planted in riparian area
- 165 Landowners participated



Before bank pull back and planting



After



Before LWD placement



After

Recovering Systems Processes in Reese Creek

Marys River Watershed Council, Kathleen Westly

- 1 mi habitat improvements: Pacific lamprey, freshwater mussels, cutthroat trout
- 25 bank pull backs to inundate areas in winter flows – seeded with native grasses
- 26 LWD to improve floodplain connectivity
- 13 acres riparian invasives control – herbicide
- 12 acres meadow mowing
- 1,350 live willow stakes planted
- 5,200 lf old fencing removed for wildlife safety



Esther Creek old tide gate



New tide gate



Esther Creek Tide Gate Fish Passage Improvement Trout Unlimited, Liz Ransom

- Removal of failing tide gate impeding fish passage for salmon
- Installation of new tide gate and culvert

Sand Dune Phacelia Introduction Chelsea Monks SNF Botany & Invasive Species Program Manager



Recreation Technician helps plant sand dune phacelia plugs near Horsfall.

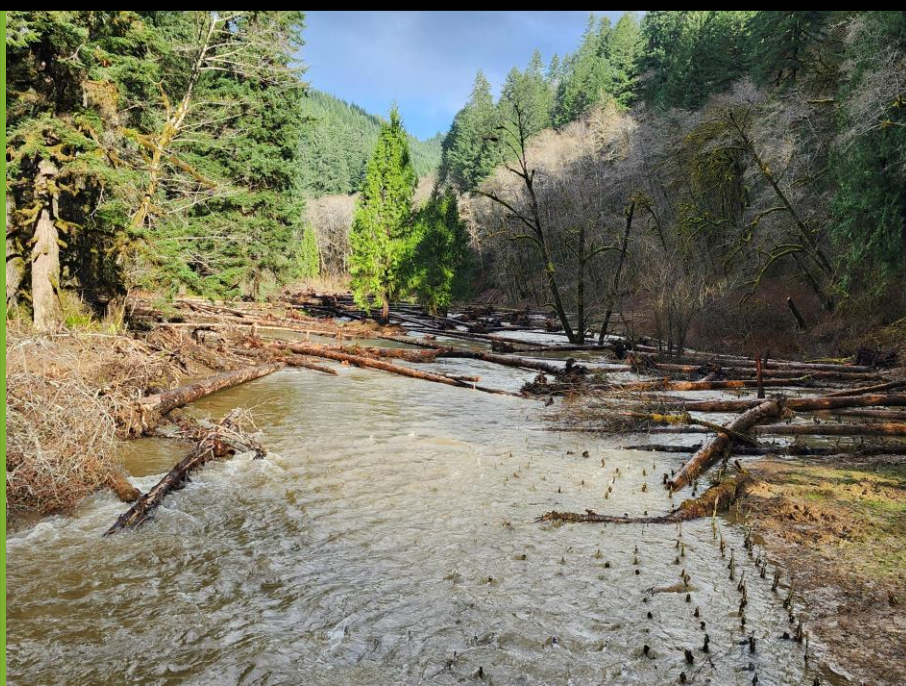


sand dune phacelia in bloom

- 14 native species seeds gathered and produced for 2025 planting
- 1,165 plugs prepared and planted in the Oregon Dunes (sand dune phacelia, seashore lupine, beach strawberry)
- ~11.48 lbs of native seed collected and consolidated (multiple forb and grass species)



FS employees and partners monitor for seedling success in sand dune phacelia introduction area.



West Deadwood Creek Restoration Chris Mayes, Hebo Ranger District

- 11 acres T&E Habitat Restoration of Deadwood Creek's disconnected floodplain
- Adopt "Stream Evolution Model"
- Restore to "Stage Zero" conditions





before

after

Abandoned Vehicle Removal Project (Lincoln County) Chris Mayes, Hebo Ranger District

- 31 abandoned vehicles removed from SNF
- supplements Lincoln County & Source Water Protection funds



Predator Control/Nest Protection Devices



Beachgrass Removal



Western Snowy Plover



Monitoring camera

Western Snowy Plover T&E Habitat Restoration Meagan Campbell, SNF Central Coast Ranger District

Since 2004:

- # predator control/nest protection devices installed
- # monitoring cameras installed
- # acres beachgrass removal
- Others?

Hebo Tree Reforestation Andrea Pedroza, SNF Central Coast Ranger District

Vegetation control:

- 70 acres tree release
- 312 acres animal damage control
- Vexar tubing & fencing installed to protect seedlings





Coastal Meadow Restoration Crystal Barnes, Hebo Ranger District

This project will produce 5lbs of violet seed for five years and several plant plugs for restoration including:

- T&E Species Habitat Restoration
- Oregon Silverspot Butterfly
- Early Seral Habitat Maintenance
- Plant Materials Production
- Invasive Pulling