

# Siuslaw Stewardship Watershed Restoration Program 2025 Annual Summary Report



The Siuslaw Stewardship Watershed Restoration Program (SSWRP) is a forest stewardship cooperative effort between the Siuslaw National Forest (SNF), Cascade Pacific RC&D and other partners including local communities, watershed councils, landowners, conservation districts, tribes, contractors, businesses, government agencies, environmental groups and industry. The purpose of the program is to utilize Stewardship [contract] Timber Sales to fund watershed restoration projects on the Siuslaw National Forest and nearby private and non-federal lands within the Alsea, Hebo, Marys Peak, Siuslaw, and Smith-Umpqua Dunes Stewardship Group areas. This report summarizes the 2025 bio-physical accomplishments and economic benefits of the three program areas: Stewardship Timber Sales; On-Forest projects; and Off-Forest projects.

## Program-wide Biophysical Accomplishments — *Restoration services performed by SNF, contractors or partners*

### VEGETATION MANAGEMENT

2 tide gates removed (1) & installed (1)  
 95 acres meadow mowing  
 2549 lbs seeds collected/14 native species for restoration  
 83 acres meadow maintenance and mowing  
 230 seed fields increase created for seed propagation  
 590 snags and 185 pieces course wood created  
 8165 natives planted on 141 ac meadow, dunes, upland forest  
 1165 native plugs planted in Oregon dunes  
 75,428 plants and trees propagated on 478 acres

### INVASIVES CONTROL

40 acres riparian herbicide  
 106 acres riparian mechanical  
 26 acres riparian manual  
 62 acres upland forest mechanical  
 12 acres meadow manual  
 407 acres meadow mechanical  
 285 acres dunes, meadow, upland forest herbicide  
 123 acres dunes, meadow, upland forest manual

### STREAM, LAKE OR WETLAND TREATMENTS

30 undersized culverts replaced for fish passage  
 22 acres of water quality improvements  
 31 abandoned vehicles removed/water quality imp.  
 622 logs placed instream along 4 stream miles  
 7,810 native trees planted on 16 acres riparian area  
 12,835 linear feet of riparian fencing installed

### THREATENED & ENDANGERED SPECIES

2532 acres Snowy Plover nest protection devices  
 2535 acres Snowy Plover predator management  
 2080 Habitat Restoration plantings on 448 acres

### ROAD WORK

183 miles road improvements/deferred maintenance

## Program-wide Local Economic Benefits — *Jobs and income created from on-the-ground stewardship activity*

County	Income Earned	Avg Wage	State Taxes	Hours Worked	FTE Jobs
Benton	\$1,637,803.43	21.8	\$147,402.31	75,135.47	37.27
Coos	\$84,897.00	19.58	\$7,640.73	4,334.96	2.15
Deschutes	\$5,000.00	16.13	\$450.00	309.98	0.15
Douglas	\$223,466.00	22.28	\$20,111.94	10,031.82	4.98
Lane	\$5,672,169.41	23.5	\$510,495.25	241,378.88	119.73
Lincoln	\$379,313.26	22.11	\$34,138.19	17,158.72	8.51
Marion	\$29,006.71	16.13	\$2,610.60	1,798.31	0.89
Polk	\$2,973.00	25.81	\$267.57	115.19	0.06
Tillamook	\$813,445.25	19.93	\$73,210.07	40,821.86	20.25
Yamhill	\$4,211,101.92	25	\$378,999.17	168,444.08	83.55
	<b>\$13,059,175.99</b>	<b>21.22</b>	<b>\$1,175,325.84</b>	<b>559,529.27</b>	<b>277.54</b>



# 2025 Off-Forest SSWRP Project Summaries

## Biophysical Accomplishments

*Restoration services performed by Stewardship partners*

### VEGETATION MANAGEMENT

- 2 tide gates removed (1) & installed (1)
- 12 acres meadow mowing
- 16 seed field increase/seed propagation
- 841 trees planted on 10 acres upland forest
- 1,000 native species planted on 4 acres of dunes
- 2,537 lbs seeds collected, stored, prepared for growout
- 5,684 native species planted on 7 acres meadow

### STREAM, LAKE OR WETLAND TREATMENTS

- 2 undersized culverts replaced
- 22 acres of water quality improvements
- 622 logs placed instream along 4 stream miles
- 7,810 native trees planted on 16 acres riparian area
- 12,835 linear feet of riparian fencing installed
- 75,428 plants and trees propagated on 478 acres

### INVASIVES CONTROL TREATMENTS

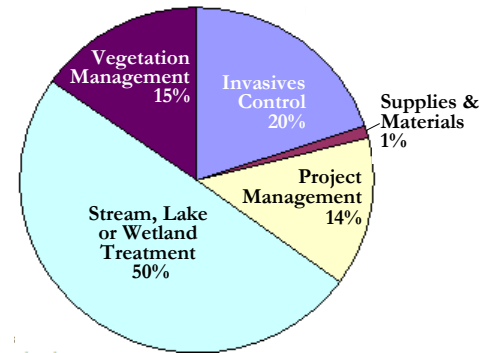
- 40 acres riparian herbicide
- 106 acres riparian mechanical
- 26 acres riparian manual
- 56 acres dunes, meadow, upland forest herbicide
- 13 acres dunes, meadow, upland forest manual

## Active Projects in 2025

Project Name	Organization
Marys Peak West Point Meadow Restoration	AFRANA
North Spit Restoration	CWA
Phillips Creek Riparian Enhancement	MidCoast WC
Putting Beaver Back in Beaver Creek	
Re-infusing Large Wood in Woods Creek	Marys River WC
Recovering Systems in Reese Creek	
Recovering System Process in Shotpouch Creek	
Invasive Species Management Strategy Commitment	
Sutton Creek Culvert Replacement	NNSLWC
Nestucca Large Wood Placement Project	
Wasson Forest Invasive Species Control	Smith River WC
Riparian Restoration & Maintenance Prog: 2025-2026	Siuslaw WC
Riparian Restoration MiseryChickCondonSweet Creeks	
Bear Creek Habitat Phase 3	Siuslaw SWCD
Hansen Creek Floodplain Restoration	
Dorff/Steinberg Stage 0 Floodplain Restoration	
Northwest Oregon Restoration Partnership (NORP)	TEP
Riparian Restoration-Backyard Planting Program	
Coastal Prairie Habitat Restoration at Westwind	Camp Westwind
Esther Creek Tide Gate Fish Passage Improvement	Trout Unlimited
Alsea Noxious Weed Control	Lincoln SWCD
Coastal Pollinator Meadow Restoration	

## Restoration Expenditures

*Total: \$830,983*



## Local Economic Benefits—Jobs & Income created

County <i>(contractor resides)</i>	Income Earned	Avg. Wage	State Taxes	Hours Worked	FTE Jobs
Benton	\$127,602.84	\$20.64	\$11,484.26	6,181.58	3.07
Coos	\$12,171.00	\$16.13	\$1,095.39	754.56	0.37
Lane	\$315,238.62	\$18.14	\$28,371.48	17,379.71	8.62
Lincoln	\$8,690.00	\$16.13	\$782.10	538.75	0.27
Marion	\$29,006.71	\$16.13	\$2,610.60	1,798.31	0.89
Tillamook	\$147,852.88	\$19.6	\$13,306.76	7,542.24	3.74
	<b>\$640,562.05</b>	<b>\$17.80</b>	<b>\$57,650.58</b>	<b>34,195.14</b>	<b>16.96</b>



Bear Creek Habitat Enhancement Phase III: fencing & planting  
Siuslaw SWCD, Seth Mead

# 2025 On-Forest SSRWP Project Summaries

## Biophysical Accomplishments

Restoration activity performed by the SNF and/or contractors

### VEGETATION MANAGEMENT

- 170 acres seed field increase/production
- 12 lbs seeds collected from 14 native species for dunes restoration
- 1165 native plugs planted in Oregon dunes

### STREAM, LAKE OR WETLAND TREATMENT

- 31 abandoned vehicles removed/water quality imp.

### INVASIVES CONTROL

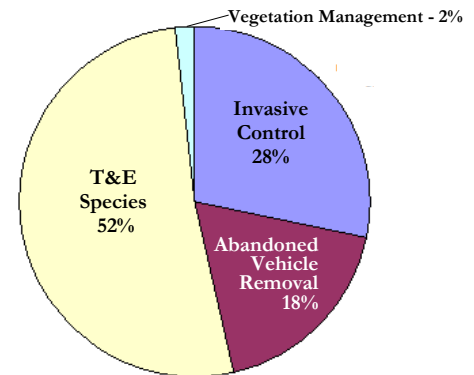
- 12 acres meadow manual
- 360 acres meadow, dunes, upland forest mechanical
- 200 acres meadow, dunes, upland forest herbicide

### THREATENED & ENDANGERED SPECIES

- 2532 acres Snowy Plover nest protection devices
- 2535 acres Snowy Plover predator management
- 2080 native plantings/Habitat Restoration on 448 acres

## Restoration Expenditures

Total: \$831,734

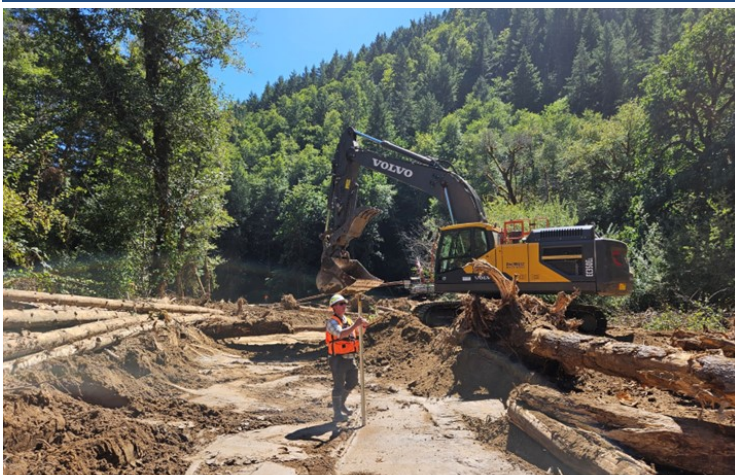


## Local Economic Benefits — Jobs & Income created

County (contractor resides)	Income Earned	Avg. Wage	State Taxes	Hours Worked	FTE Jobs
Benton	\$10,000.00	\$16.13	\$900.00	619.96	0.31
Coos	\$72,726.00	\$20.31	\$6,545.34	3,580.41	1.78
Deschutes	\$5,000.00	\$16.13	\$450.00	309.98	0.15
Douglas	\$223,466.00	\$22.28	\$20,111.94	10,031.82	4.98
Lane	\$302,623.00	\$22.62	\$27,236.07	13,376.33	6.64
Lincoln	\$214,946.00	\$24.33	\$19,345.14	8,836.11	4.38
Polk	\$2,973.00	\$25.81	\$267.57	115.19	0.06
	<b>\$831,734.00</b>	<b>\$21.08</b>	<b>\$74,856.06</b>	<b>36,869.79</b>	<b>18.29</b>

## Active Projects in 2025

Project Name	Project Manager
APHIS-WS Predator Control Western Snowy Plover	Meagan Campbell
Snowy Plover Habitat Restoration/Beachgrass Removal	Meagan Campbell
ORBIC Nest Protection Western Snowy Plover	Meagan Campbell
Upper Deadwood Creek Restoration	Chris Mayes
Central Coast North Invasive Plant Treatments	Matt Smith
CCRD-ODNRA Restoration/Invasive Control	Matt Smith/Armand Rebischke
ODNRA Recreation Site Veg Control	Armand Rebischke
Abandoned Vehicle Removal	Chris Mayes
Shared Biologist	David Hill
Native Plant Materials Development	Chelsea Monks
Natural Resource Interns on Hebo RD	Eric Anderson
Animal Damage Control for Reforestation	Andrea Pedroza
Hebo Tree Release and Weed Removal	Andrea Pedroza



West Deadwood Creek Restoration, Chris Mayes, Hebo Ranger District



Native Plant Materials: Chelsea Monks, Botany & Invasive Species Program Manager

